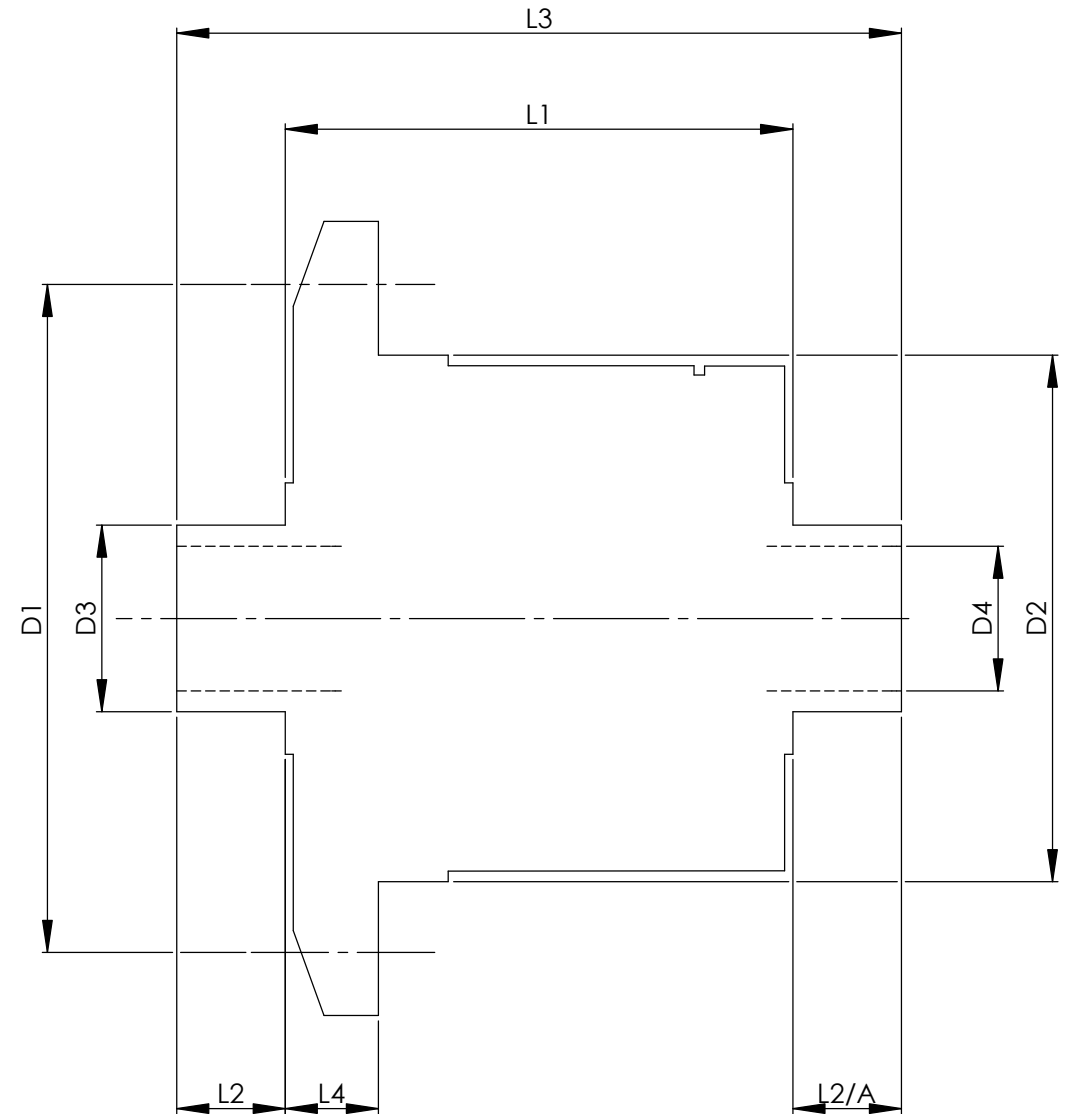


		INCH	MM
CROWN WHEEL BOLT PCD	D1	5.9055	150
No. OF BOLTS		10	10
THREAD / THRO' HOLE		0.402	10.2
CROWN WHEEL SPIGOT DIA	D2	5.0391	128.0
BEARING DIA	D3	1.773	45.0
BEARING DISTANCE	L1	5.040	128.0
SPIGOT LENGTH	L2	0.750	19.0
	L2/A	0.740	18.8
OVERALL LENGTH	L3	6.530	165.9
BEARING/CROWN WHEEL	L4	1.220	31.0
BORE	D4	1.260	32.0
DRIVE SHAFT SPLINE:-			
No. OF TEETH		29	
PITCH			
TYPE		FILLET ROOT	SIDE FIT
PRESSURE ANGLE		45 DEG	



TITLE R.W.D. DIFF DATA SHEET.

SCALE 1:1 U.O.S. SHEET 1 OF 1

**Drg. No.** QDF7L

**Quaife Design & Development.**

IF IN DOUBT, ASK.

THIS DRAWING OR DESIGN IS STRICTLY CONFIDENTIAL & THE COPYRIGHT THEREIN IS THE EXCLUSIVE PROPERTY OF R.T. QUAIFF ENGINEERING LTD. AND MAY NOT BE USED COPIED OR EXHIBITED WITHOUT THEIR WRITTEN PERMISSION.

FINISH. MACH.	GRIND@G
LIMITS. FRACT. ± 1/64"	
DEC. ± 0.005"	
MATERIAL.	
TREATMENT.	
ISSUE. 01 DATE. 19.5.05	
DRAWN BY. M.L.M.	
<b>Used In.</b> NISSAN R200 280-300Z	
(fits both 10mm & 12mm bolts)	