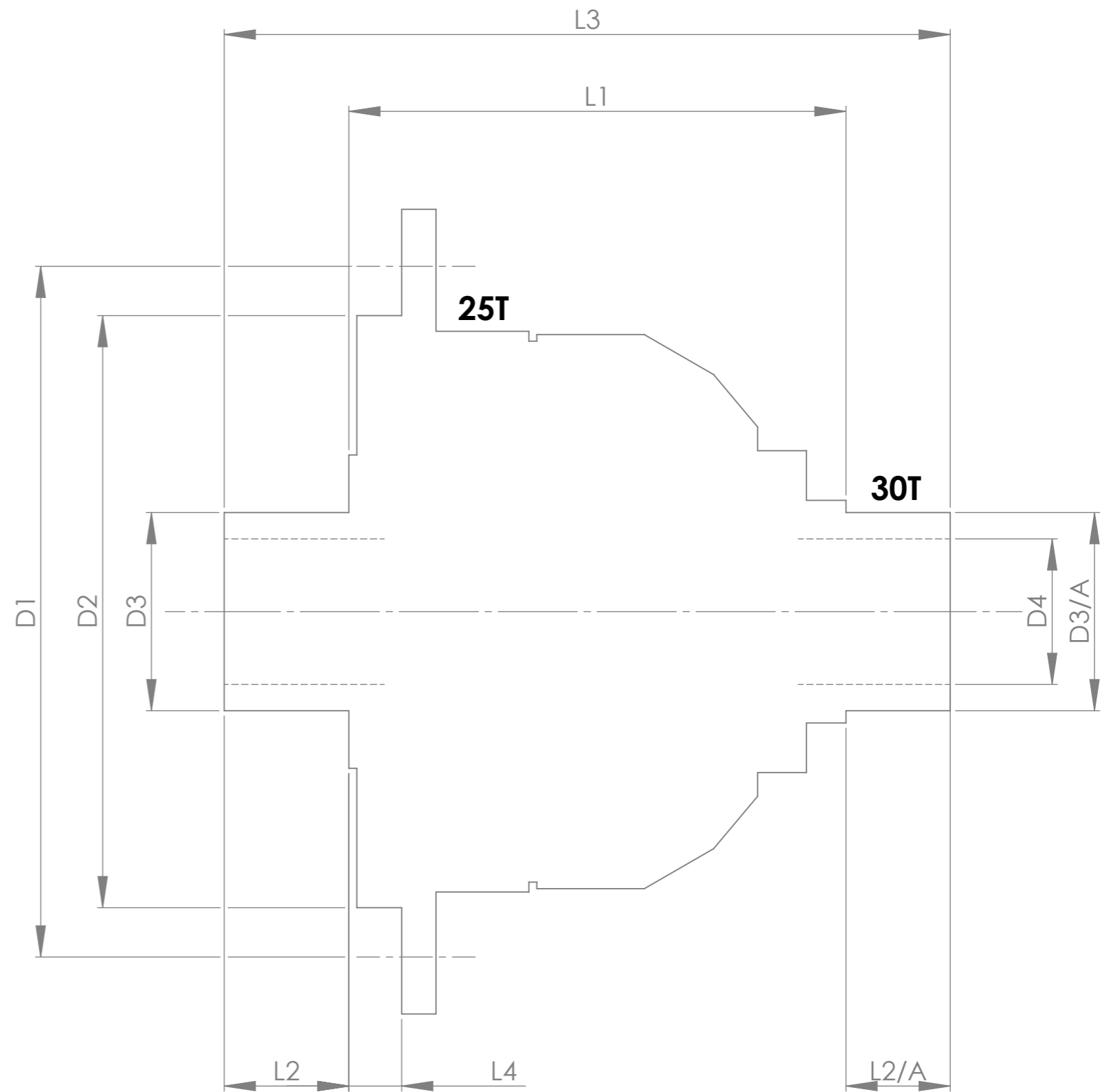


		INCH	MM
CROWN WHEEL BOLT PCD	D1	6.063	154.0
No. OF BOLTS		12	12.0
THREAD / THRO' HOLE		7/16" U.N.F.	7/16" U.N.F.
CROWN WHEEL SPIGOT DIA	D2	4.728	120.1
BEARING DIA	D3	1.783	45.3
	D3/A	1.8914	48.0
BEARING DISTANCE	L1	4.449	113.0
SPIGOT LENGTH	L2	0.784	19.9
	L2/A	2.037	51.7
OVERALL LENGTH	L3	7.27	184.7
BEARING/CROWN WHEEL BORE	L4	0.312	7.9
	D4	1.221	31.0

DRIVE SHAFT SPLINE:-

No. OF TEETH	37
PITCH	32/64 D.P.
TYPE	FILLET ROOT SIDE FIT
PRESSURE ANGLE	30°



TITLE F.W.D. DIFF DATA SHEET.
SCALE 1:1 U.O.S. SHEET 1 OF 1
Drg. No. QDF25R

Quaife Design & Development.

IF IN DOUBT, ASK.

THIS DRAWING OR DESIGN IS STRICTLY CONFIDENTIAL & THE COPYRIGHT THEREIN IS THE EXCLUSIVE PROPERTY OF RT QUAIFFE ENGINEERING LTD. AND MAY NOT BE USED COPIED OR EXHIBITED WITHOUT THEIR WRITTEN PERMISSION.

FINISH. MACH,	GRIND@G
LIMITS. FRACT. ± 1/64".	
DEC. ± 0.005".	
MATERIAL.	
TREATMENT.	
ISSUE. 01 DATE. 15.11.12	
DRAWN BY. J.P.D.	

Used In. V.W. DSG DIFF.