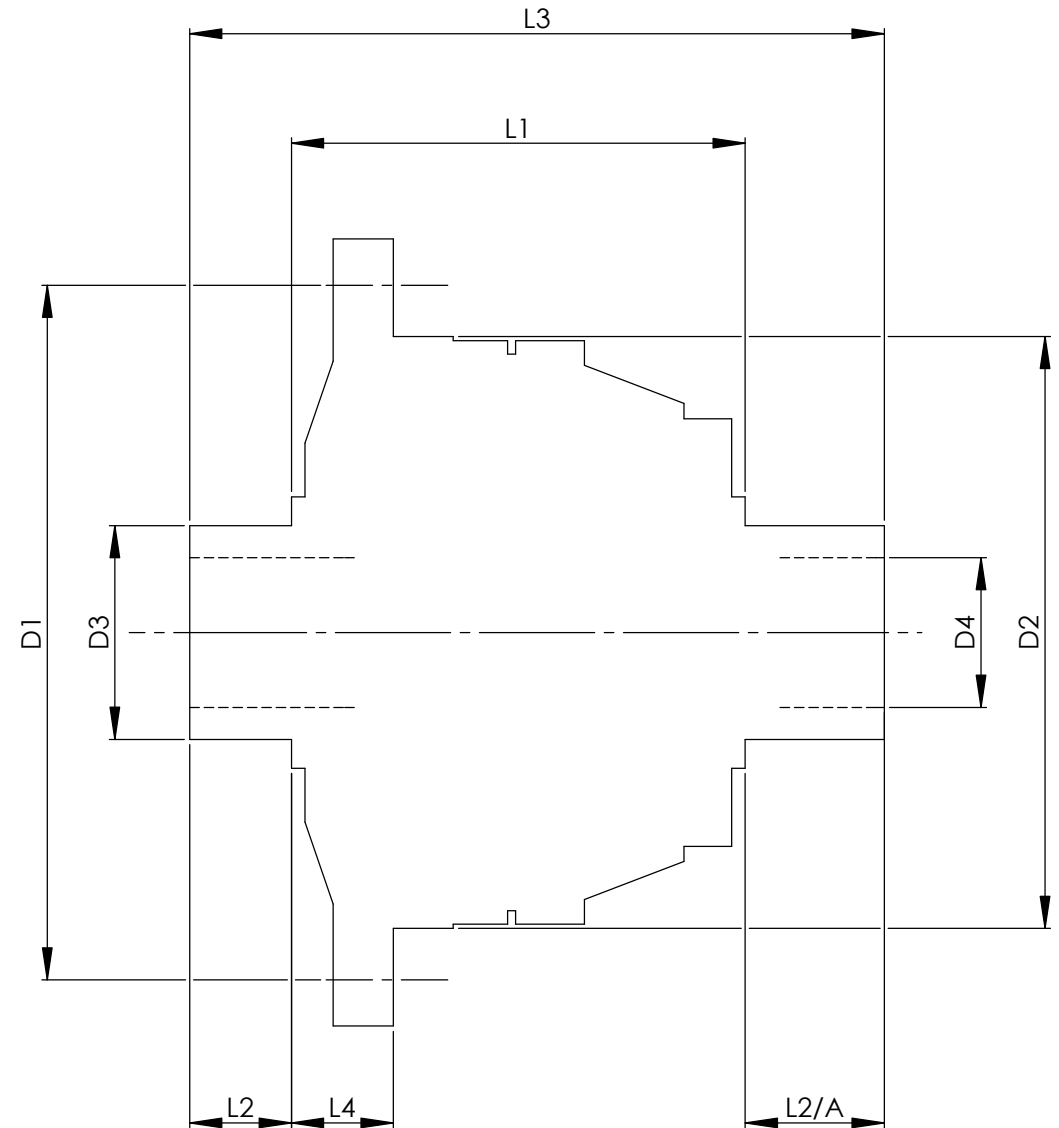


		INCH	MM
CROWN WHEEL BOLT PCD	D1	5.900	149.9
No. OF BOLTS		10	10
THREAD / THRO' HOLE		0.522	13.3
CROWN WHEEL SPIGOT DIA	D2	5.035	127.9
BEARING DIA	D3	1.853	47.0
BEARING DISTANCE	L1	5.550	141.0
SPIGOT LENGTH	L2	0.750	19.0
	L2/A	0.750	19.0
OVERALL LENGTH	L3	7.050	179.1
BEARING/CROWN WHEEL	L4	1.122	28.5
BORE	D4	1.300	33.0
DRIVE SHAFT SPLINE:-			
No. OF TEETH		31	
PITCH			
TYPE			
PRESSURE ANGLE			



TITLE F.W.D. DIFF DATA SHEET.
SCALE 1:1 U.O.S. SHEET 1 OF 1
Drg. No. QDF10L

Quaife Design & Development.

IF IN DOUBT, ASK.

THIS DRAWING OR DESIGN IS STRICTLY CONFIDENTIAL & THE COPYRIGHT THEREIN IS THE EXCLUSIVE PROPERTY OF R.T. QUAIFF ENGINEERING LTD. AND MAY NOT BE USED COPIED OR EXHIBITED WITHOUT THEIR WRITTEN PERMISSION.

FINISH. MACH.	GRIND@G
LIMITS. FRACT. ± 1/64"	
DEC. ± 0.005"	
MATERIAL.	
TREATMENT.	
ISSUE. 01 DATE. 23.5.05	
DRAWN BY. M.L.M.	
Used In. NISSAN 350Z	