

		INCH	MM
CROWN WHEEL BOLT PCD	D1	5.276	134.0
No. OF BOLTS		10	10
THREAD / THRO' HOLE		0.433	11.0
CROWN WHEEL SPIGOT DIA	D2	4.529	115.0
BEARING DIA	D3	1.970	50.0
	D3/A	1.812	46.0
BEARING DISTANCE	L1	4.214	107.0
SPIGOT LENGTH	L2	1.498	38.0
	L2/A	1.534	39.0
OVERALL LENGTH	L3	7.246	184.0
BEARING/CROWN WHEEL	L4	0.295	7.5
BORE	D4	1.496	38.0

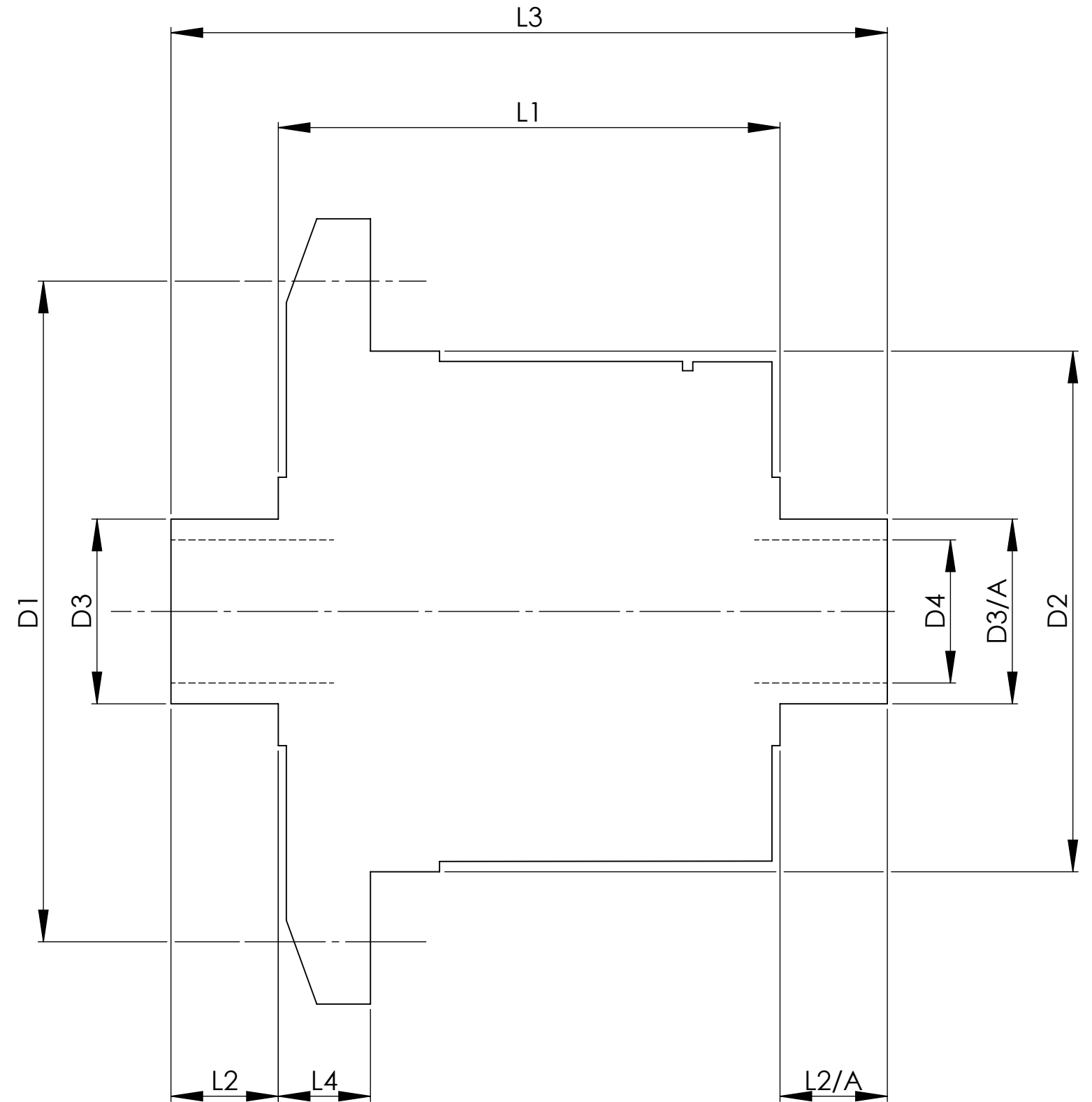
DRIVE SHAFT SPLINE:-

No. OF TEETH

PITCH

TYPE

37
32/64 D.P.
FILLET ROOT SIDE FIT



TITLE R.W.D. DIFF DATA SHEET.
SCALE 1:1 U.O.S. SHEET 1 OF 1
Drg. No. QDF16Q

Quaife Design & Development.

IF IN DOUBT, ASK.

THIS DRAWING OR DESIGN IS STRICTLY CONFIDENTIAL & THE COPYRIGHT THEREIN IS THE EXCLUSIVE PROPERTY OF RT QUAIFFE ENGINEERING LTD. AND MAY NOT BE USED COPIED OR EXHIBITED WITHOUT THEIR WRITTEN PERMISSION.

FINISH. MACH,	GRIND@G
LIMITS. FRACT. $\pm 1/64"$.	
DEC. $\pm 0.005"$.	
MATERIAL.	
TREATMENT.	
ISSUE. 01 DATE. 16.11.10	
DRAWN BY. J.P.D.	

Used In. PORSCHE 987 CAYMAN