

Drg No. QDF15R

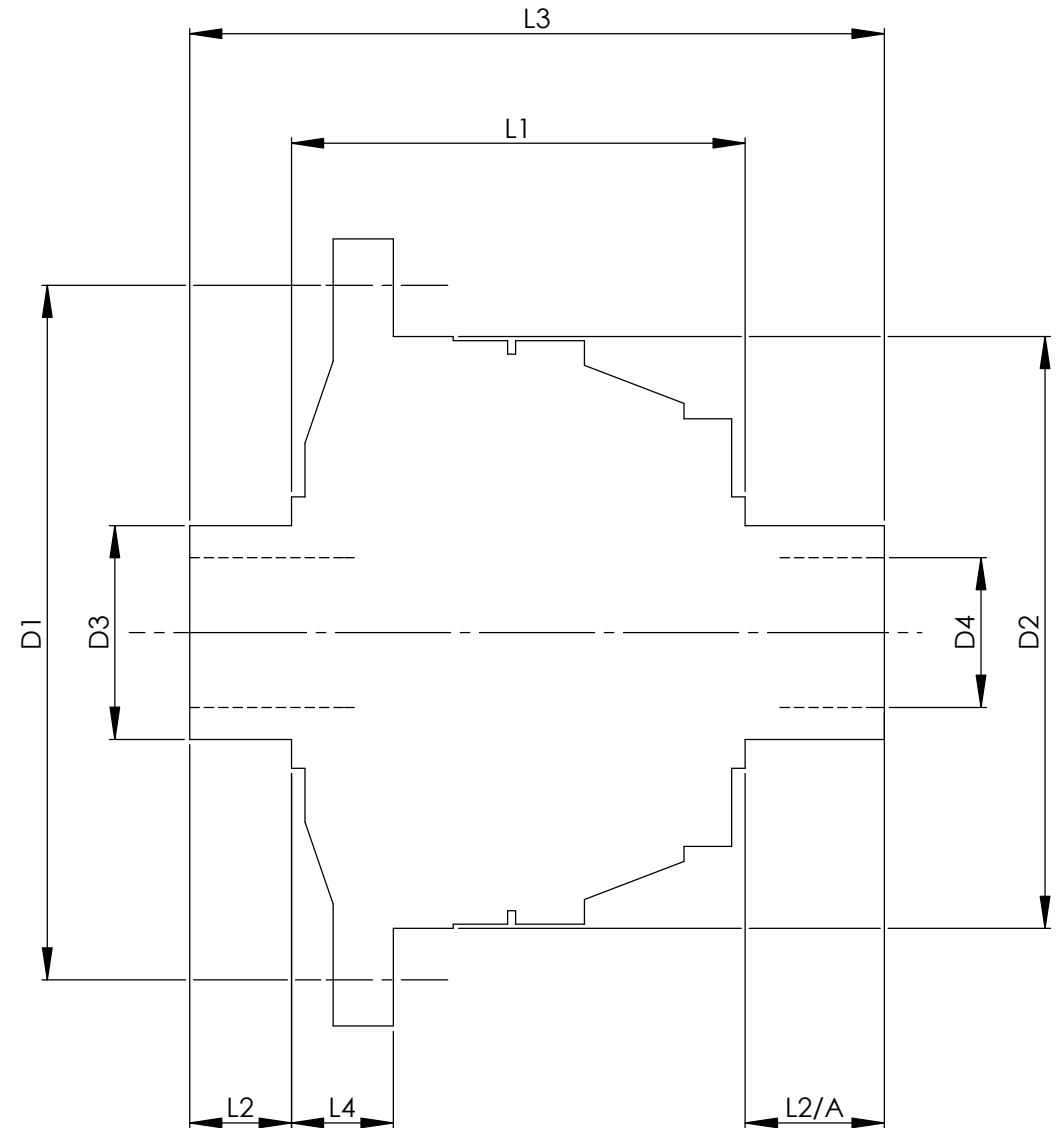
REMOVE ALL BURRS AND SHARP EDGES.

THIRD ANGLE PROJECTION.

| | | INCH | MM |
|------------------------|------|-------------|----------|
| CROWN WHEEL BOLT PCD | D1 | 5.236 | 133 |
| No. OF BOLTS | | 8 | 8 |
| THREAD / THRO' HOLE | | 0.448/0.369 | 11.4/9.4 |
| CROWN WHEEL SPIGOT DIA | D2 | 4.488 | 114.0 |
| BEARING DIA | D3 | 1.6154 | 41.0 |
| BEARING DISTANCE | L1 | 4.111 | 104.4 |
| SPIGOT LENGTH | L2 | 0.857 | 21.8 |
| | L2/A | 1.139 | 28.9 |
| OVERALL LENGTH | L3 | 6.107 | 155.1 |
| BEARING/CROWN WHEEL | L4 | 0.804 | 20.4 |
| BORE | D4 | 1.201 | 30.5 |

DRIVE SHAFT SPLINE:-

| | |
|----------------|----------------------|
| No. OF TEETH | 33 |
| PITCH | 32/64 DP |
| TYPE | FILLET ROOT SIDE FIT |
| PRESSURE ANGLE | 30 DEG |



TITLE F.W.D. DIFF DATA SHEET.

SCALE 1:1 U.O.S. SHEET 1 OF 1

Drg. No. QDF15R

Quaife Design & Development.

IF IN DOUBT, ASK.

THIS DRAWING OR DESIGN IS STRICTLY CONFIDENTIAL & THE COPYRIGHT THEREIN IS THE EXCLUSIVE PROPERTY OF R.T. QUAIFF ENGINEERING LTD. AND MAY NOT BE USED COPIED OR EXHIBITED WITHOUT THEIR WRITTEN PERMISSION.

| | |
|-------------------------|---------|
| FINISH. MACH. | GRIND@G |
| LIMITS. FRACT. ± 1/64" | |
| DEC. ± 0.005" | |
| MATERIAL. | |
| TREATMENT. | |
| ISSUE. 01 DATE. 26.5.05 | |
| DRAWN BY. M.L.M. | |

Used In. VW GOLF RALLYE 02C 4WD FRONT DIFF